


John Deere
3225C Series ROPS & GBPP
Parts List & Mounting Instructions

Jodale • Perry

Printed: 2004/06

Deere 3225C Series ROPS Mounting Instructions

Standard Parts List

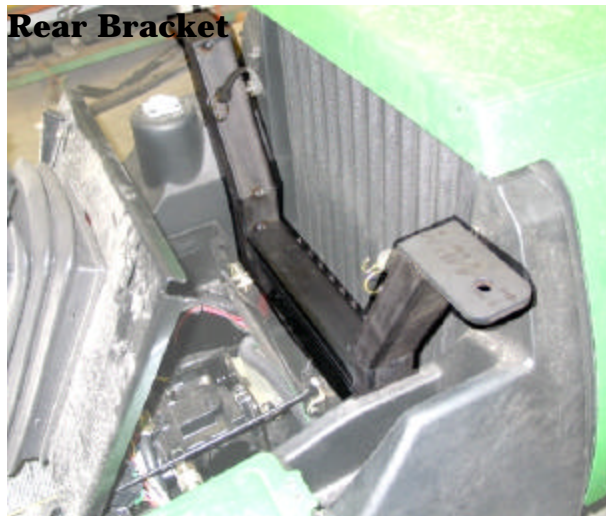
Qty	Description	Photo
1	Rear Bracket	
1	Step Weldment	
4	Bolt, Hex, M12x30x1.75MM, Gr. 8, YD	
4	Washer, Lock, 1/2", YD	
2	Bolt, Hex, 5/8" x 3", Gr. 8, YD	
2	Nut, Hex, Nylon Locking, 5/8", Gr. 8, YD	
2	Washer, Steel, Flat, 5/8" x 2", YD	
2	Washer, Rubber, Flat, 9/16" x 2 1/2", Black	
2	Isolator, Rubber, 5/8" x 2", Black	
2	Bolt, Flange, 3/8" x 3/4", YD	

NOTE: All references to left and right are taken from the operator's point of view when he/she is sitting in the driver's seat.

Deere 3225C Series ROPS Mounting Instructions

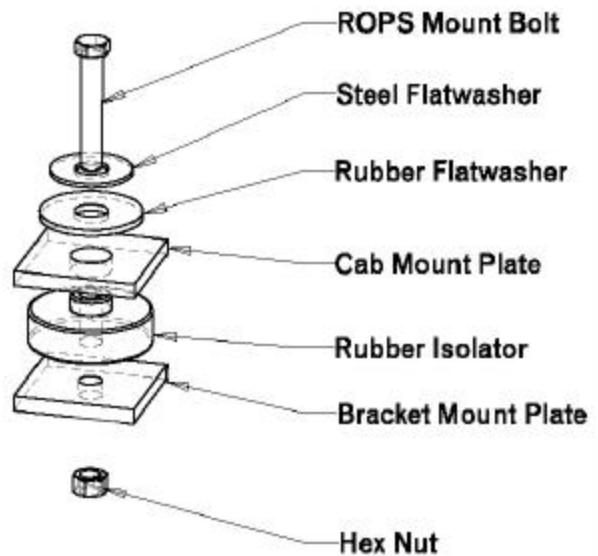
NOTE: Use the following torque specifications for all hardware: M12 hardware 73 ft-lbs, 5/8" hardware 177 ft-lbs.

1. Lower all cutting decks. Remove the 2-post ROPS.
2. Take the rear bracket and place it through the 2-post ROPS socket mount and loosely fasten with factory original fasteners. See Figure.



3. Lift the ROPS using the lift bolts provided located near the roof in the middle of the upper crossmember over top of the tractor. Place one isolator mount onto each rear bracket pad.
4. Lower the ROPS so that the rear mount plate can be fastened to the rear bracket with the 5/8" x 2" hex bolts, steel washer, rubber washer, and then lock nut. Loosely fasten only. See Bolt Order Figure.
5. Swing down the front of the ROPS in order to get the front four fasteners in the bracket started. Use the provided lock washers and M12 bolts.

Bolt Order



6. Once all bolts have been started, torque the rear isolators until there is 7/8" space between the steel plates. Use the following torque specifications for the remaining hardware: M12 hardware 73 ft-lbs, 5/8" hardware 177 ft-lbs.
7. Take the step and bolt it to the under-side of the bottom windshield crossmember on the left side. Use the 3/8" x 3/4" bolts provided.
8. If the ROPS is equipped with golf ball protection kit, remove the side shipping brackets.

NOTE: All references to left and right are taken from the operator's point of view when he/she is sitting in the driver's seat.