

# Gator Light Pole Mounting Instructions

- 1 Switch, Rocker, On/Off
- 1 Light Pole
- 1 Power Jumper Harness (w/inline fuse holder) & 20 Amp Fuse
- 2 Wire Connector, ¼" Loop
- 2 Wire Connector, Butt, 14GA
- 2 Wire Connectors, Female, 14GA, Blue
- 14 FT 14GA Power & 14GA Ground Wire in Loom

1. Lower the box. Remove the two bolts in the front left corner of the box and install light pole as shown in Figure 1. Disconnect the battery.
2. Locate a space for the switch between the two seats, and cut out a 1 ¾" x 7/8" rectangle from the black plastic cowl. The switch will be located in this position.
3. Run the wire down the light pole and install the beacon on top, and connect the red, white, and black wires together with the butt connectors provided. Route the wire underneath the box and come in from the rear of the box into the engine bay. Route the wire to where the switch is going to be located on the plastic cowl and connect the wires to the switch with the schematic provided.
4. Connect the Power Jumper Harness provided to the switch and to a 12V power supply on the vehicle with the loop that is provided.

**Figure 1**



**Figure 2**

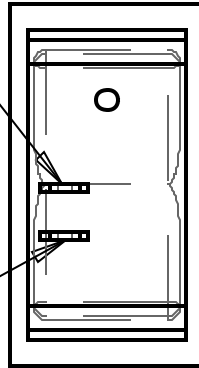


NOTE: All references to left and right are taken from the operator's point of view when he/she is sitting in the driver's seat.

	Revision	Declination	Date

B

To 12V Source on Vehicle



Red Harness Wire

Connect the Black Harness Wire to Vehicle Ground

Tolerances:  
 Unless otherwise specified  
 X.X =  $\pm 1/16"$   
 Angular =  $\pm 1.0^\circ$

A

SCALE 1.000

CONFIDENTIALITY NOTICE

This material is property of Jodale Perry Corporation (JDP) or one of its subsidiaries or affiliates and is not to be used by the recipient for any purpose other than the purpose for which it was transmitted. The material remains the property of JDP and shall be returned upon request. The material may not be reproduced or disclosed to third parties without the written consent of JDP.

Material		Req'd		<b>JODALE PERRY CORPORATION</b> Box 909, 300 Route 100, Morden MB, Canada						
				Title						
				Light Pole Schematic						
Drawn By		Date		Size		Part Number		Project		Rev
Daryl Furkalo		2003-04-28		A				Gator		
Checked By		Date		Scale		Units		File Number		
						Imperial		JDPWASM0025		