

JODALE • PERRY

**Parts List
&
Mounting Instructions**

***Jacobsen LF3400
ROPS Mesh Canopy***

JDP

BUILT FOR LIFE

LF3400 ROPS Mesh Canopy Mounting Instructions

Standard Parts/Bolts List

- L&R - Front Mounting Brackets
- L&R - Rear Mounting Brackets
- 2 - Step Brackets
- 2 - Plug Buttons
- 4 - Front Mount Spacers
- 2 - 7/16" x 4" Hex Bolts
- 2 - 7/16" Hex Nuts
- 4 - 5/8" x 3" Hex Bolts
- 4 - 5/8" x 2 1/2" O.D. Flat Washers
- 4 - 5/8" Nylon Locking Hex Nuts
- 4 - 5/8" x 2 1/2" x 1/4" Rubber Washers
- 4 - 1/2" x 2 1/2" Bolts
- 4 - 3/8" Nylon Locking Hex Nuts
- 4 - 1/2" Nylon Locking Hex Nuts
- 4 - 3/8" x 1 1/2" Hex Bolts
- 4 - 3/8" Lock Washers
- 4 - 3/8" Flat Washers
- 8 - 1/2" x 1 1/2" Hex Bolts
- 8 - 1/2" Lock Washers
- 4 - 3/8" x 3/4" Flange Bolts
- 4 - 5/8" I.D. X 2 1/2" O.D. Rubber Isolators
- 1 - Seat Belt Kit

Note: All references to left and right are taken from the operator's point of view when he/she is sitting in seat.

LF3400 ROPS Mesh Canopy Mounting Instructions

1. **PREPARING THE MACHINE.** To prepare the machine for mounting, raise the engine cover and lower the cutting decks to the ground.

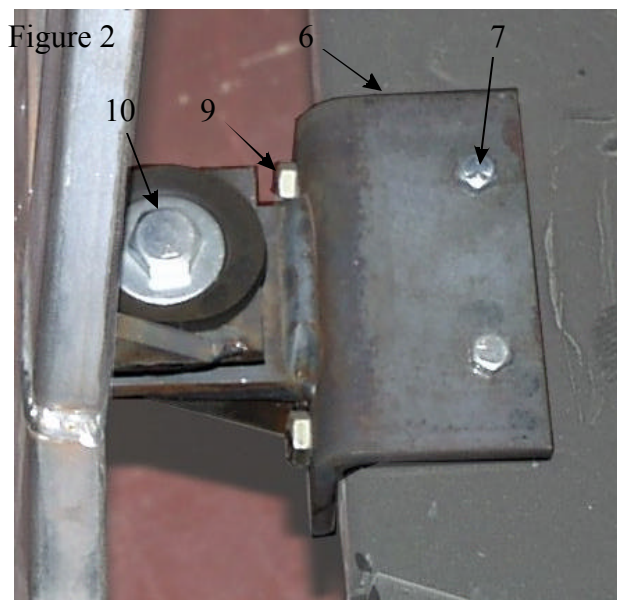
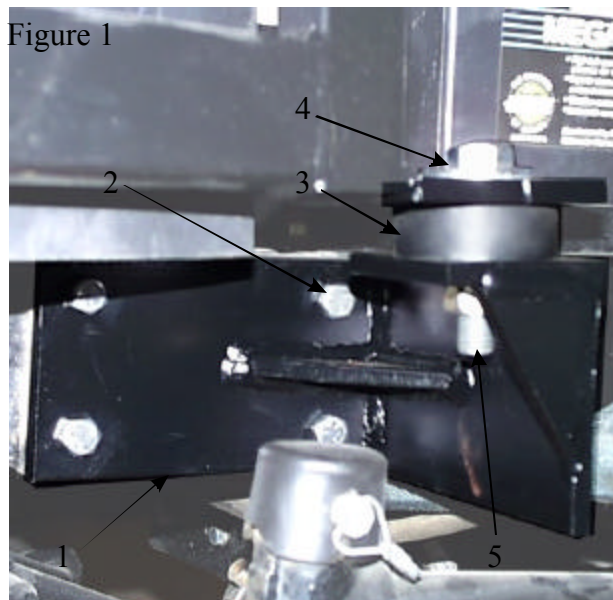
2. **ATTACHING THE REAR MOUNTING BRACKETS.** Take the left rear mounting bracket (1) and move it into position against the ROPS mounting plate that is a part of the chassis of the machine. Make sure that all four holes are lining up correctly. Secure the bracket into place using four 1/2" x 1 1/2" bolts and four 1/2" lock washers (2). Take one rubber isolator and place it on top of the mounting bracket and make sure that the holes are lined up correctly (3). See Figure 1.

3. Repeat step two for the right side.

4. **POSITIONING THE ROPS FRAME ON THE MACHINE.** Take the left and right front mounting brackets and set them onto the platform of the machine. Set one rubber isolator onto the top of each bracket and make sure that the holes are lined up correctly. Raise the ROPS frame up with a hoist and lower it into position on top of the rear mounting brackets. Secure the ROPS frame to the hoist by placing the two 7/16" x 4" bolts through the holes at the top of the B-Post and securing using the two 7/16"

nuts. Place one 5/8" rubber washer and one 5/8" flat washer (4) on to each of the rear mounts. Secure the mounts loosely into place using one 5/8" x 3" bolt, 5/8" lock washer and 5/8" nut (5) on each. Make sure that the cab is centered correctly and tighten up the bolts snugly. See Figure 1.

5. **SECURING THE FRONT MOUNTING BRACKETS.** Move the front mounting brackets so that they are in position under the front mounts of the frame (6). Make sure that the holes line up correctly. Once the brackets are lined up use the top two holes on the left one as guides to drill two 7/16" holes in the top of the foot platform. Next use the two holes on the side of the bracket to drill two 9/16" in the side lip of the platform and the plate that is behind it. Drill the holes on the right side of the platform the same way. Secure the top of the bracket loosely to the platform using two 3/8" x 1 1/2" hex bolts, two 3/8" flat washers, and two 3/8" nylon locking nuts (7). Insert one spacer between each hole in the side lip of the platform and the plate behind it (8). See Figure 3. Insert one 1/2" x 2 1/2" bolt into each of the holes in the lip of the platform and through the spacer and secure loosely with one 1/2" nylon locking nut (9).

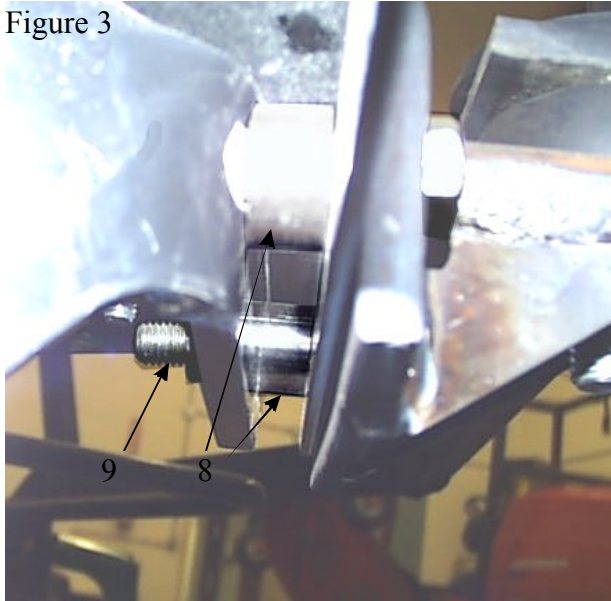


Note: All references to left and right are taken from the operator's point of view when he/she is sitting in seat.

LF3400 ROPS Mesh Canopy Mounting Instructions

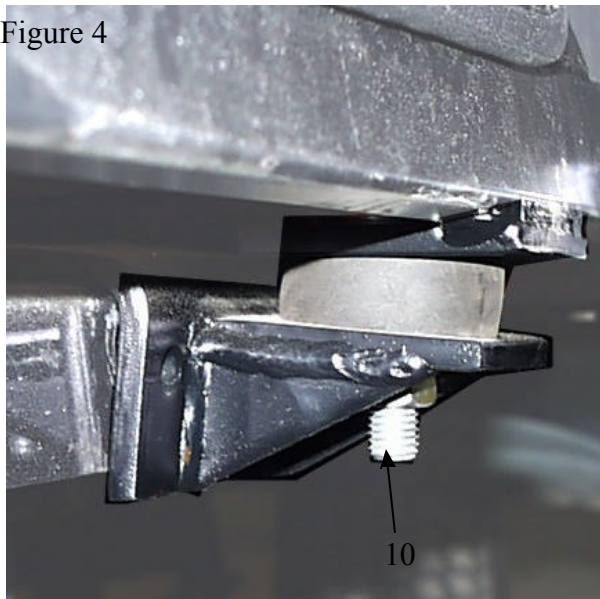
Secure the right hand front mounting bracket the same way.

Figure 3



6. SECURING THE FRONT MOUNTS. To secure the left front mount of the frame to the front mounting bracket, place one 5/8" rubber washer and one 5/8" flat washer over top of the hole. Insert one 5/8" x 3" bolt into the hole and secure loosely with one 5/8" nylon locking nut (10). See Figure 4.

Figure 4



7. Repeat step 6 for the right side. Make sure the ROPS frame is sitting squarely on the machine and tighten up all bolts snugly.

8. ATTACHING THE STEPS. Take the left hand step bracket. Move it into position against

Figure 5



the step mount on the outside of the frame (11). Make sure that the holes line up correctly and secure it into place using two 3/8" x 3/4" bolts (12).

9. Repeat step 8 for the right hand side. Take the two plug buttons and insert them into the lifting bolt holes at the top of the B-Posts.

10. Take the seat belt kit and mount to the mounting holes provide in the factory seat with the provided hardware.

Note: All references to left and right are taken from the operator's point of view when he/she is sitting in seat.